

# »» Transmission line easements and rights-of-way

Energy companies build transmission lines to serve customers, connect new generation sources, and help ensure reliable delivery of electricity to customers. The area around a transmission line is called a right-of-way (ROW) and is governed by an easement, a legal document indicating property rights that is recorded with the property.



## What are ROWs?

Rights-of-way are the actual land areas acquired for a specific purpose such as a transmission line, roadway or other infrastructure. The ROW is typically secured through negotiation and purchase of a transmission line easement.



## Can I still use the area in the ROW?

Land within the ROW may be used for any purpose that does not interfere with the construction, operation or maintenance of the transmission line. In agricultural areas, the land may continue to be used for crop production and pasture.



## What is a transmission line easement?

A transmission line easement is a property right that allows our team to access, construct, operate and maintain transmission structures and lines on your property while you maintain ownership and use of your land.



## What is the Buy the Farm?

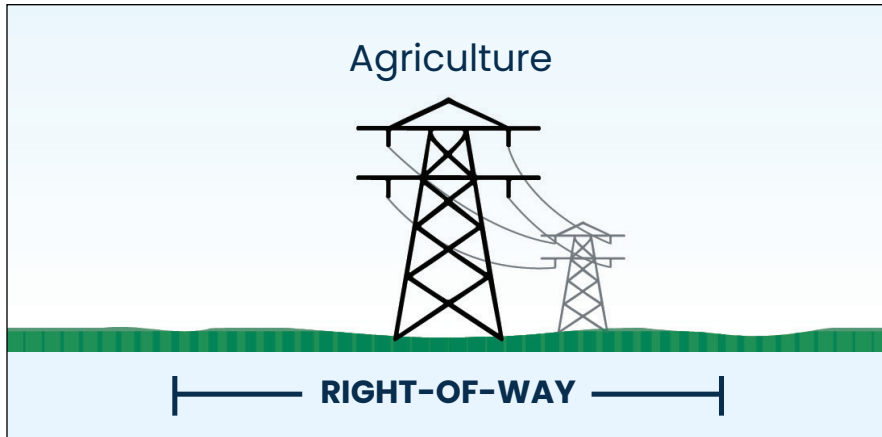
Buy the Farm is a law in Minnesota that gives property owners the right to require utility providers to purchase their entire property rather than a right-of-way for a transmission line if certain conditions are met. The law only applies to transmission line projects that are 200 kV or higher and does not apply to all types of property.



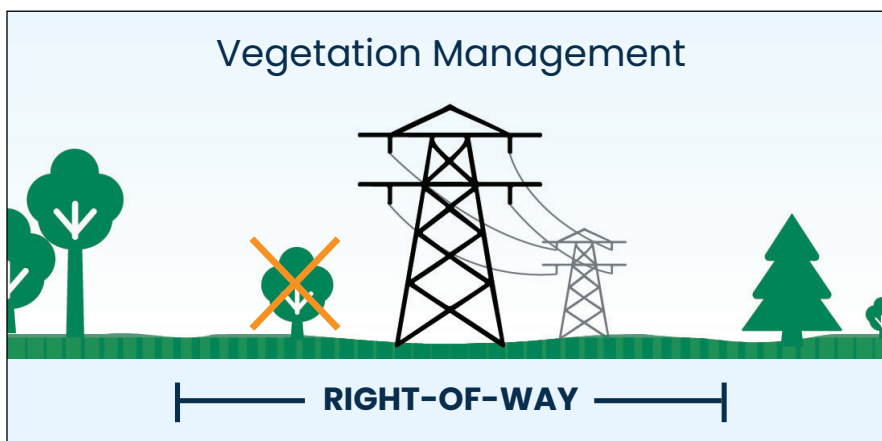
## What is the ROW needed for this project?

Dairyland Power Cooperative and Xcel Energy will be seeking up to 250 feet easements (up to 125 feet on each side from the centerline) for the Gopher to Badger Link. There might be some instances where a larger easement may be required. The ROW is typically secured through negotiation and purchase of a transmission line easement. Landowners will be assigned a land agent to provide them with information about their specific property.

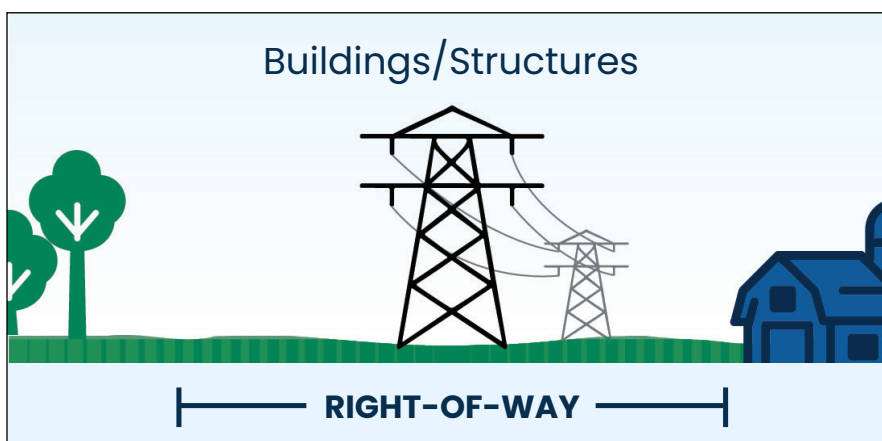
## ALLOWED USES WITHIN EASEMENTS



- ◀ After construction, normal agriculture and farming activities may resume.



- ◀ Tree clearing, pruning and large shrub removal within the ROW will be required to allow for safe operation and maintenance of the transmission line.



- ◀ Buildings or other structures are not allowed in the ROW to maintain adequate clearance and safety. Landowners must receive written approval from the utility to build structures in the ROW.